



Model #AF-19

Cooling

Temperature Range	-5°F - 2°F
Refrigerant	R290
Max. Ambient Temperature	90°F
Defrosting	Automatic
Temperature Controller	Digital
Horsepower	1/2

Electrical

Voltage	115
Amps	7.1
Hz	60
Phase	1
Plug Type	NEMA-5-15P
Electrical Cord Length	96"

Standard Features

- Self-closing door with convenient stay-open feature
- Easy-to-clean 430 series stainless steel exterior
- Painted aluminum interior
- Temperature range of (-5)°F - 2°F
- 3 shelves included: versatile shelf slide design also accepts full size food pans
- Environmentally-safe R290 refrigerant
- Digital temperature controller with automatic defrost function
- 115V; 1/2 HP ETL Safety & Sanitation Listed
- ETL listed. Conforms to UL STD. 471, Certified to CSA STD. C22. 2No.120
- Conforms to NSF/ANSI STD. 7.

Construction

Exterior Material	430 Stainless Steel
Interior Material	Painted aluminum
Insulation Material	Foamed-In-Place Polyurethane
Shelf Size (3)	20-7/8"W x 25-3/16"D
Shelf Material	Epoxy-Coated Steel
Shelf Load Capacity	120 lbs.

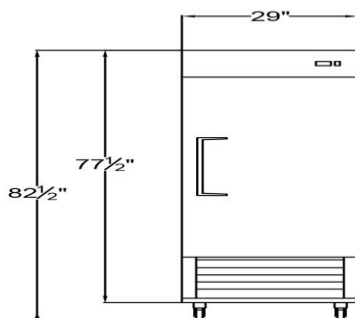
Dimensions

Exterior Dimensions	29"W x 25-1/2"D x 82-1/2"H
Interior Dimensions	24"W x 27 1/2"D x 60"H
Shipping Dimensions	31"W x 27"D x 83"H
Net Volume	19 cu. ft.
Net Weight	236 lbs.
Gross Weight	280 lbs.

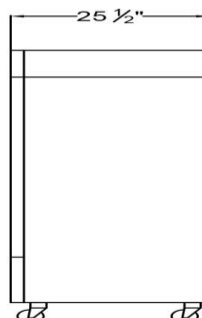


PLAN VIEW

Front View



Side View



Top View

